

KNARESBOROUGH FOREST

Past, present and future

David Turner Rhodes

RIBA, IHBC, RTPI [rtd]

The setting of the forest has been inhabited by humans from the earliest of times:

Primitive marks at Almscliffe Cragg etc

Iron age settlement at Bilton

Roman road crossing the forest from Manchester to Aldborough c100 to 400AD

Synod of Nidd in 705

William the Conqueror establishes various Royal Forests c1066 to 1087

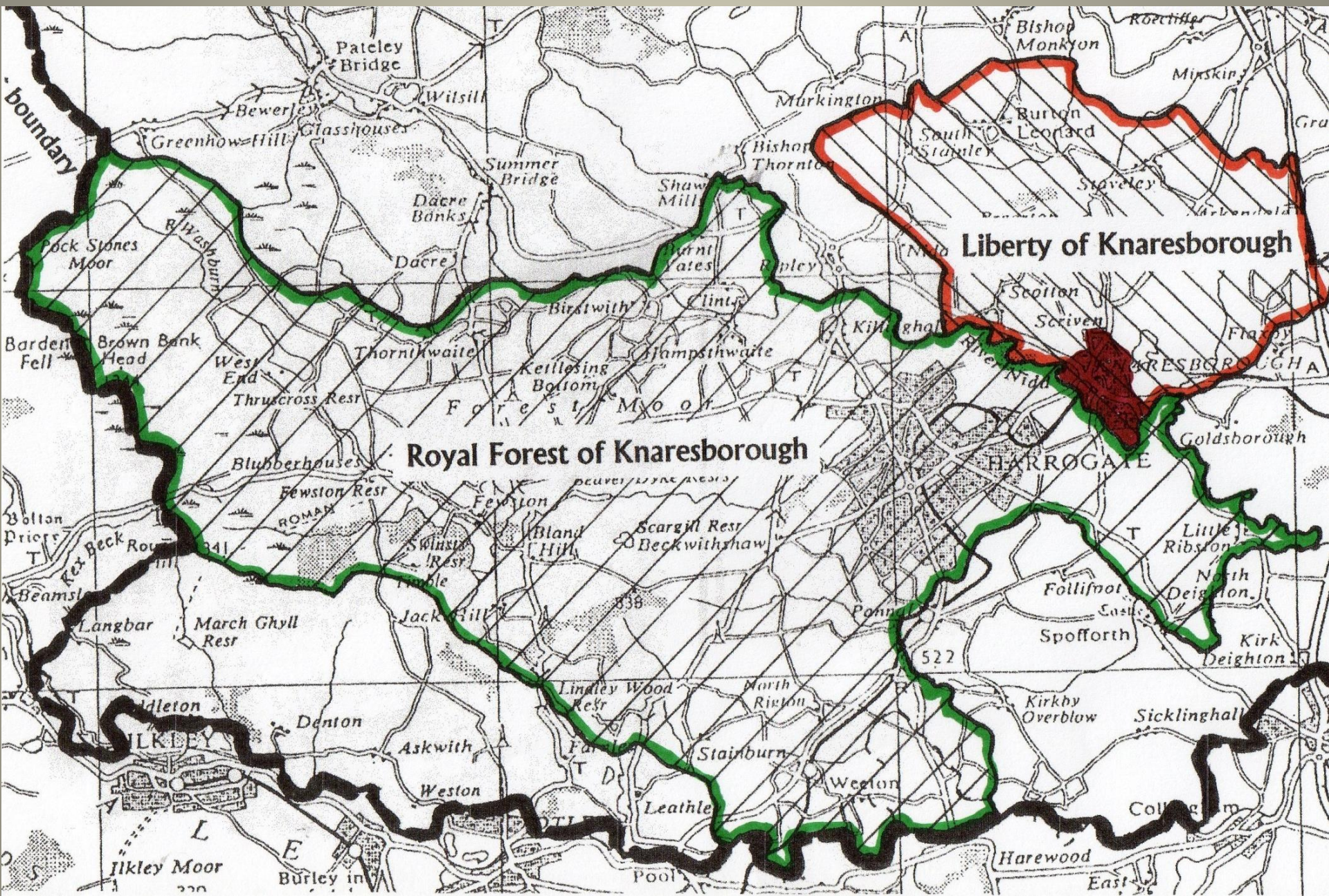
KNARESBOROUGH FOREST

c1000 to 1770

A **FOREST** is not just woodland it includes: moorland, hillside, grassland & **woodland** quarry, lead&coal mines, lime-kiln, water-mill churches, hamlet, village, town

The **HONOUR** of Knaresborough was ruled by the Sovereign or Lord at the castle and entails:

1. **Borough/town** of Knaresborough & its Castle
2. **Liberty** – flat land NE of town used for crops
3. **Forest** of Knaresborough goes west of the town beyond Blubberhouses and is mainly between the rivers Nidd and Wharfe



Liberty of Knaresborough

Royal Forest of Knaresborough

HARROGATE

ILKLEY

The PAST – 1000 to 1770

- 1086 Doomsday survey mentions Chenaresburgh [Knaresborough]
- 1167 Earliest known written mention of Knaresborough Forest
- 1170 The Castle Constable - Hugh de Moreville is one of the four knights that killed Becket and then took refuge in the castle
- 1210 King John starts the Maundy gifts at the castle
- 1216 King John visits Robert Foure [St Robert] in his cave by the Nidd
- 1257 Knaresborough Priory Charter granted
- 1307 Edward II grants the Honour of Knaresborough to his favourite Piers Gaviston along with £2175 to build the remarkable castle we know today [primarily using cathedral stonemasons].
- 1328 Edward III marries Queen Philippa at York and honeymoon at Knaresborough Castle and he hunts in the forest.
- 1332 Court roll on the Forest mentions the name 'Harrogate'
- 1349 The Black Death a deadly virus wiped out half the population
- 1357 Thomas Ingleby knighted for saving the Kings life when out hunting
- 1566 Queen Elizabeth perambulation of the ancient forest customs.
- 1644 Battle of Marston Moor-Parliamentary forces defeat Royalist forces
- 1767 Commission Perambulation of the forest establishes the boundaries
- 1770 Enclosure Act makes provision for disposal of Knaresborough Forest and the provision of 200 acres of open-land by local springs [The Stray]



RARESHOROUH CASTLE IN YORK-SHIRE

A strong Castle built by Suro de Durgu, near the time of the Conqueror. It Henry III created Hubert de Burgh Earl of Kent, on whom amongst other things he settled this Manour, Castle and Honour. It returned again to the Crown, and Edward III (God's Bless) gave it to his favourite THOMAS DE GAVESTON; after his death it remained in the Crown till 14th of Edward III (God's Bless) who granted it to John of Gaunt Duke of Lancaster; besides other great Estates gave him this Castle and Honour to maintain his Grandeur, from that time this has belonged to the Duchy of Lancaster. The Castle is long since demolished, but from an Old Draught now remaining in the Dutchy Office, this Plate was Engraved.

Josephus Sculpsit Lond: 1735.

YORKS



- 1 Vaulted porch
- 2 Entrance stair
- 3 Waiting room
- 4 King's Hall
- 5 Bed Chamber
- 6 Wardrobe
- 7 Octagonal basement
- 8 Gatehouse (demolished)
- 9 Watchtower
- 10 Parapets and battlements with fighting figures



Thomas Jefferys 1771 Map of Yorkshire
 (Extracts from plates VII, VIII, XII, XIII - courtesy of NYCC Record Office)

KNARESBOROUGH FOREST

Outline of Approximate 1770
 Enclosure Boundary



The PRESENT – 1770 to 2020

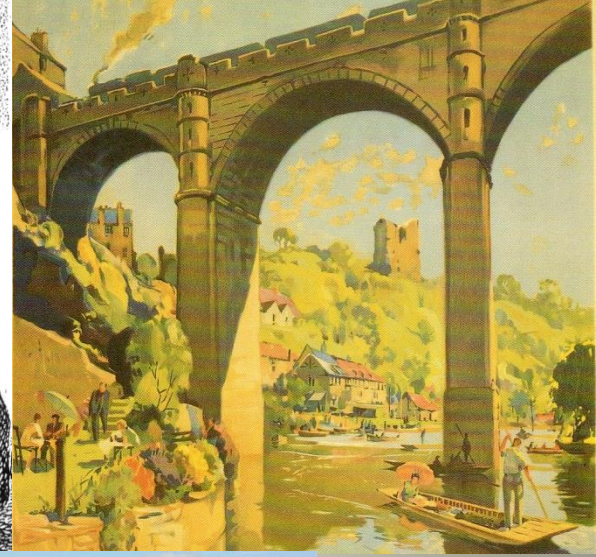
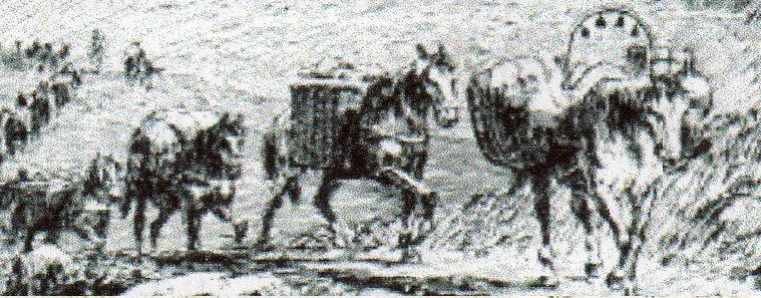
1767 The Duchy of Lancaster's Perambulation marks out the 'Metes and Bounds' of the Forest with 49 stone markers

1770 The Enclosure Act makes provision for the disposal of Knaresborough Forest and the provision of 200 acres of open-land alongside local springs [The Stray]

1770 on June 25th The Enclosure Commissioners had their first meeting at Pannal in the Crown Inn [Crown Hotel, Harrogate]

1778 August 19th The Award of the Commissioners for the Enclosure of Knaresborough Forest came formally into effect and the open common [Harrogate Stray] was established

High and Low Harrogate developed, turn-pike roads, railways, reservoirs, A1M, Menwith Hill, wind turbines have arrived but the Castle and Stray remain along with the Crimple, Nidd and Wharfe, Almscliffe Cragg ancient oak trees at Ripley parkland and numerous woodland walks in the ancient **Knaresborough Forest**



The **FUTURE** 2020 to 2050

2017 – Yorkshire Authorities support a community **White Rose Forest**

2018 – Government support Northern Power-House proposal for a community **Northern Forest** [coast to coast] from Liverpool to Hull with the aim to - *reduce carbon effect, prevent flooding and promote well-being* – 50 million trees over 25 years

2018 - **Zero Carbon Harrogate** hold a Woodland Seminar at Ripley

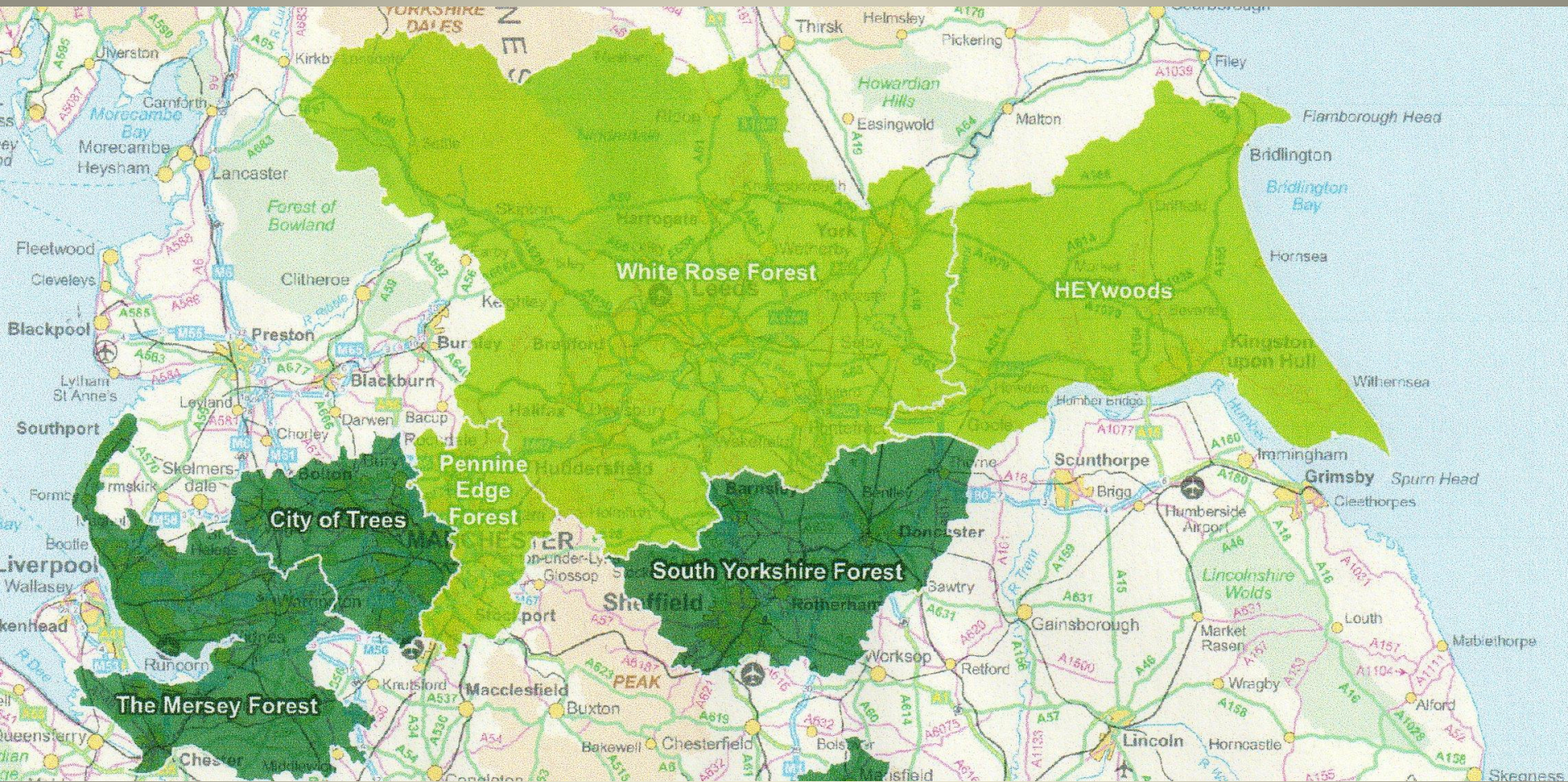
2018 - HBC and other Yorkshire Authorities agree to produce by 2020 a strategy for *woodland planting* of linking urban and water course locations.

2020 June 25th is the 250th Anniversary of the provision of 200 acres of public open land [the Stray] and the Enclosure of **-Knaresborough Forest -**

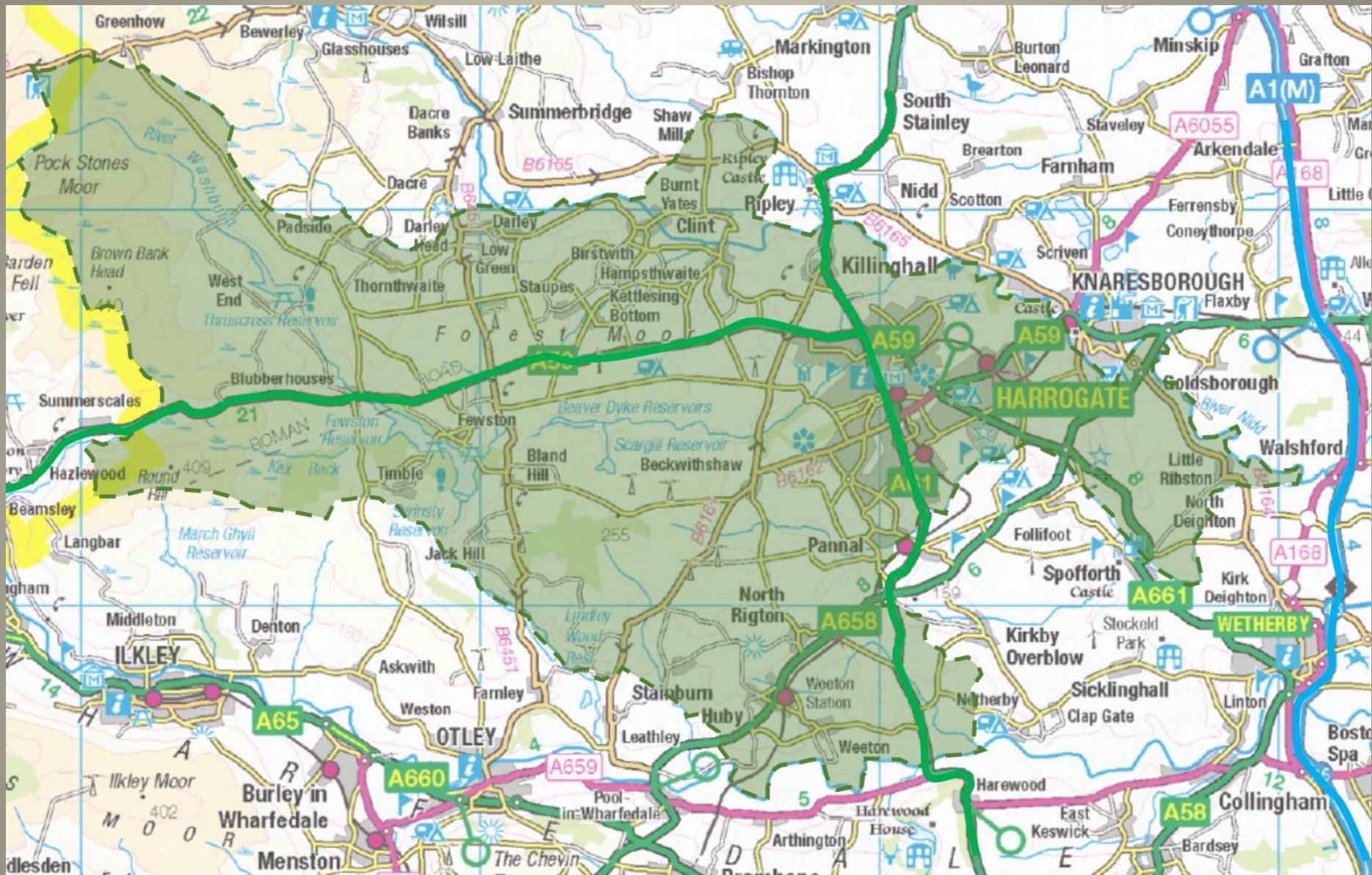
2020 to 2050 - HBC -**Woodland Strategy** implemented over a 30 year woodland planting along with many other LA's to form a vast **White Rose Forest** for Yorkshire



The STRAY Harrogate



The coast to coast **NORTHERN FOREST**



KNARESBOROUGH FOREST

KNARESBOROUGH FOREST - Woodlands and attractions in the forest area:

Harrogate Borough Council:

Almsford Wood

Birk Crag

Pinewoods

Bebra Gardens

Nidderdale Greenway

The Stray

Valley Gardens

Knaresborough Castle

Mercer Gallery

Royal Pump Room Museum

Forestry Commission:

Stainburn Forest

Warren Plantation

Woodland Trust:

Briscoe Wood

Nidd Gorge

Yorkshire Wildlife Trust

Burton Leonard

Staveley Carr

Yorkshire Water:

Beaver Dyke reservoir

Fewston reservoir

Linley Wood reservoir

Scargill reservoir

Swinsty reservoir

Ten Acres reservoir

Thruscross reservoir

Private attractions

Allerton castle

Harewood castle & hall

Ripley castle , parkland & village

Spofforth castle [EH]

Harlow Carr [RHS]

Goldsborough Hall Hotel & grounds

Mother Shipton's & the Long Walk

Rudding Park Hotel and grounds

Washburn Heritage Centre



Forest Moor

Forest Lane

Forest Cricket Club

Forest House - Vet. Surgery

Forest School

Brief - BIBLIOGRAPHY

Harrogate and the Forest of Knaresborough by *Grainger* 1871

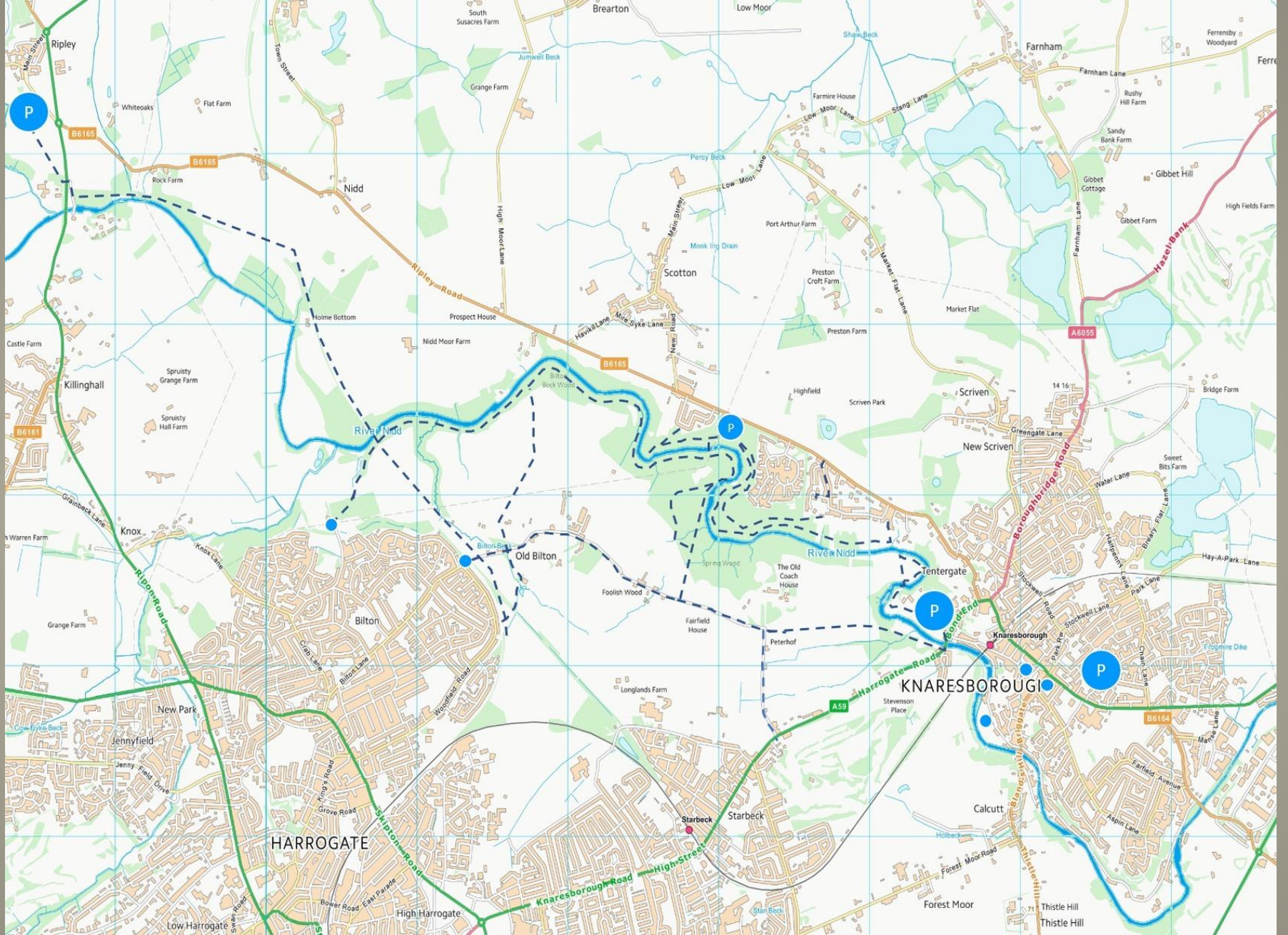
Lays and Leaves of the Forest by *Parkinson* 1882

Nidderdale and the Garden of Nidd by *Speight* 1894

The Boundary Stones of Knaresborough Forest by *Mason & Webster* 2009

History and Hikes of the Forest of Knaresborough by *Brough* 2013

The Metes and Bounds of Knaresborough Forest by *Brophy and Haley* 2017



NIDD GORGE Knaresborough



Conyngham Hall Knaresborough

2020 to 2050

Knaresborough Forest in the
White Rose Forest in the
coast to coast Northern Forest

2020 is the 250th Anniversary of the Duchy Commissioners for Knaresborough Forest meetings at

- Harrogate on 25th June at the Crown Inn [Hotel]
- Ripley on 23rd July at Star Inn, [today the Boar's Head]
- Knaresborough on 13th August at Horse and Groom, [today the Commercial]

